

Research of Building Material



東京大学

REN YUQI





Research of fly ash (supplementary cementitious materials)

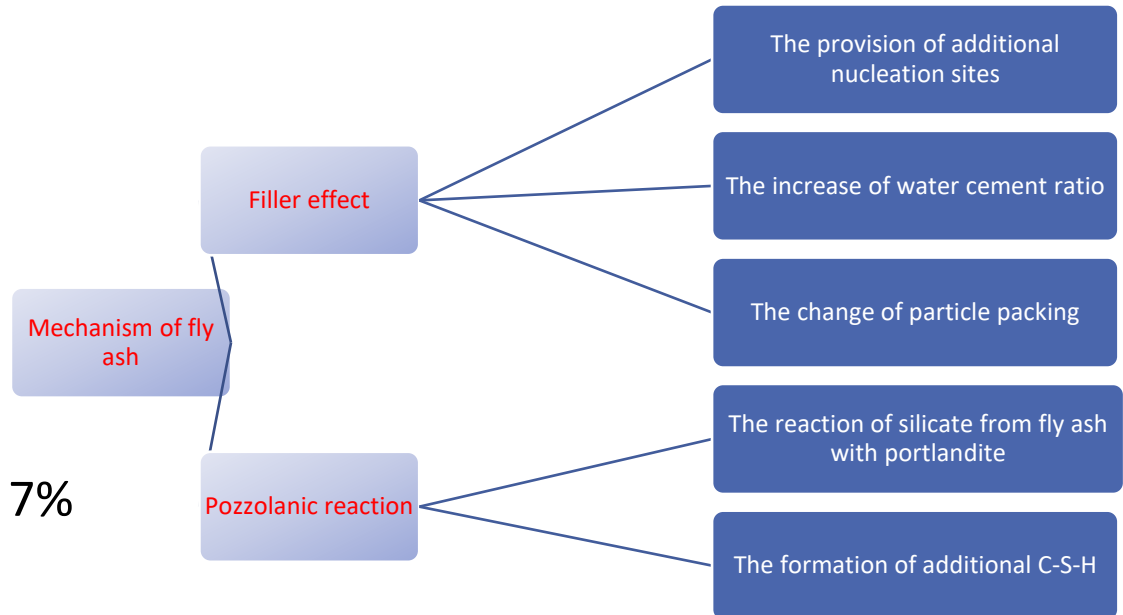
type



Class C

Class F

effect



CaO about 20%

CaO about 7%

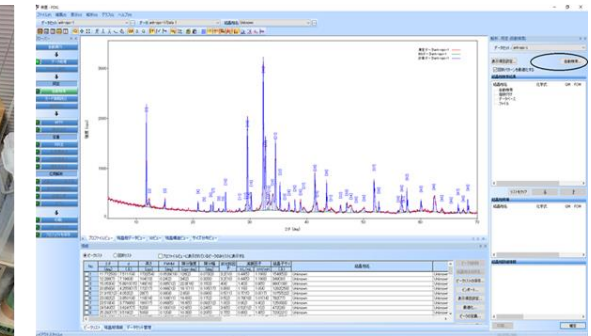
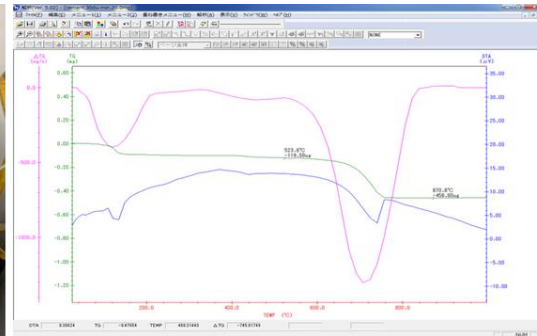


The important things in research

It is important to consider the order of
experiment and methods of calculating data
before experiments

Thermogravimetric analysis

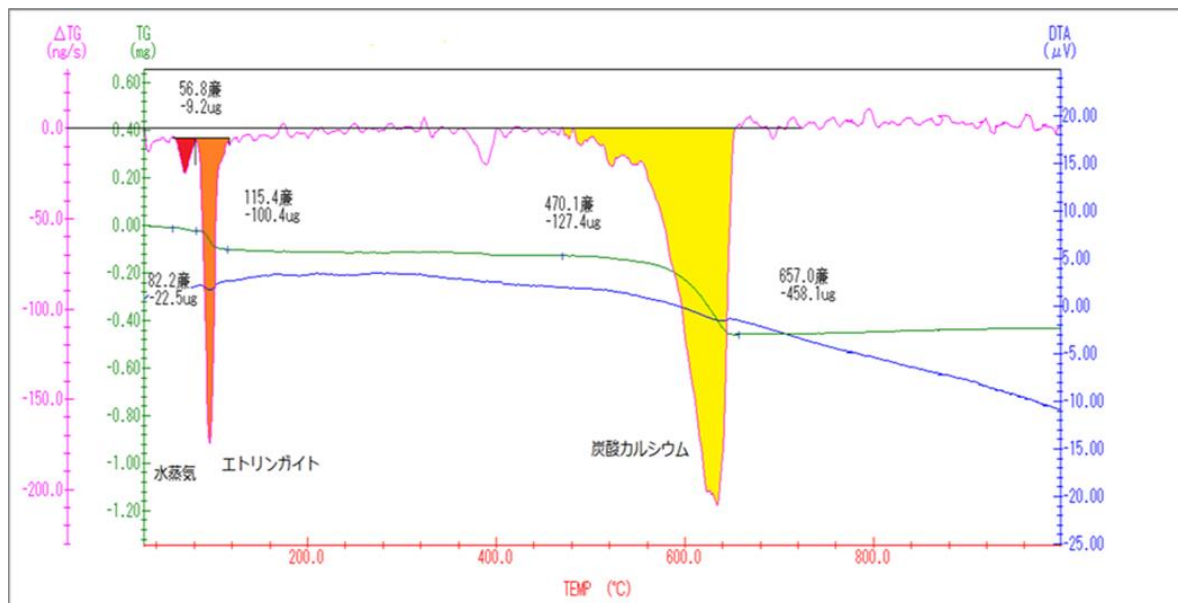
X-ray diffraction experiment





An example of TG experiment

Experiment data of TG



The result of two methods

	CO2の量 / mg	炭酸カルシウム / mg	水蒸気 / mg	イトリンナイトでのH2O / mg	イトリンナイト / mg
Result of integrate	0.3291	0.747954545	0.0076	0.0688	4.796888889
Result of software	0.3307	0.751590909	0.0133	0.0779	5.431361111